



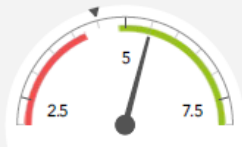
Cox Green GCSE results 2017

KS4 Attainment 2017 · Actual results

144 pupils

Attainment 8 (Overall)

5.5+ ↑



Significantly above the national average (4.5) ◀

% English & Maths (Grade 4+)

81%+



Significantly above the national average (62%) ◀

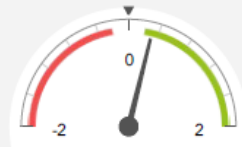
Attainment at Cox Green is 'significantly above' the national average. This significance is shown in the overall attainment of our GCSE students as well as in the core elements of English and Maths.

KS4 Progress 2017 · Value Added

137 matched pupils

Progress 8 (Overall)

+0.30+



Significantly above the national average (0) ◀

% English & Maths (Grade 4+)

+5%



In line with the national average (0%) ◀

Progress 8 score of +0.3. The value added by Cox Green School is also significantly above the National average. Students achieve a 1/3 better overall in Progress 8 than the national average.

KS4 Attainment 2017

144 pupils

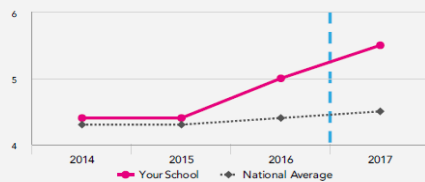
Attainment 8 (Overall)

5.5+ ↑

FFT Rank 11



Significantly above the national average (4.5)



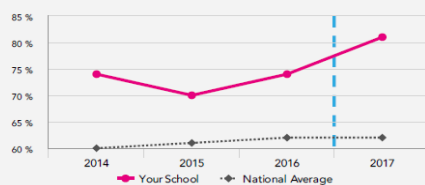
% English & Maths (Grade 4+)

81%+

FFT Rank 13



Significantly above the national average (62%)



Cox Green School continues its upward trend in GCSE exam performance since 2015. We are currently ranked in the top 11% for attainment overall and the top 13% for attainment in English and Maths



KS4 higher and lower performing pupil groups 2017

	Higher performing
Overall achievement pupil progress	Female (65) + SEN Support (13) Middle attainers (43) +
English pupil progress	Female (65)
Mathematics pupil progress	SEN Support (13) Higher attainers (67) + Not FSM (ever) (114) +
Subjects pupil progress	D&T Resistant Materials GCSE (19) + Catering Studies Non-GCSE (16) + Applied Info Tech Non-GCSE (137) + ↓ Music GCSE (28) + Chemistry GCSE (30)

Key areas of exceptional performance include Girls in English, High Prior attainers in Maths, SEN students overall and in Maths.

Other high performing subjects include D&T, Catering, vocational ICT, Music and Chemistry.

KS4 Pupil groups performance 2017

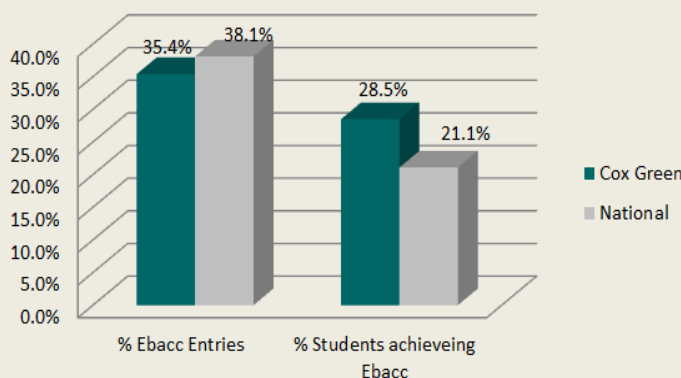
			Actual result	
	Pupils	Attainment 8 (Overall)	% English & Maths (Grade 4+)	
Summary All Pupils	144	5.5 + ↑	81% +	
Gender	Male	74	5.3 + ↑	76% +
	Female	70	5.8 +	87% +

Girls are out-performing boys but the boys are still attaining significantly above national average.

FSM Ever	FSM (ever)	24	4.5	67% +
	Not FSM (ever)	120	5.7 + ↑	84% +
SEN Group	SEN Support	13	5.1 +	77% +
	EHC Plan	2	5.8	100%
	No SEN	129	5.6 + ↑	81% +

Disadvantaged students perform significantly above National average in English and Maths (4-9) as do students on SEN support and EHCP.

Cox Green EBacc Entries and Performance 2017



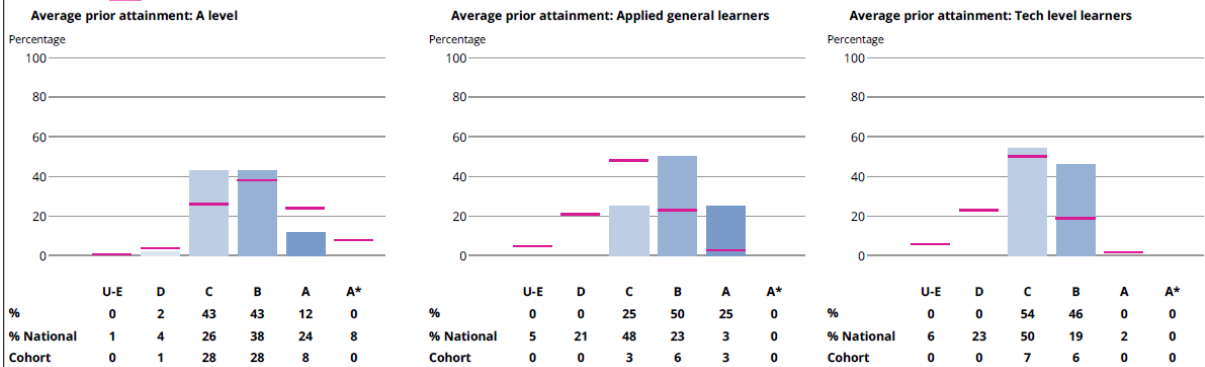
Students electing to follow the EBacc pathway achieve well above National average. Cox Green students achieving EBacc in 2017 was 28.5% of the cohort. This figure is 7.4% higher than the National average of 21.1%.



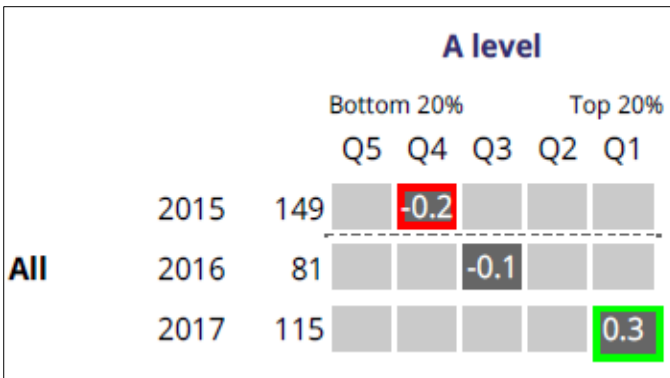
Post 16

Prior attainment grade distribution

At key stage 4 ■ National



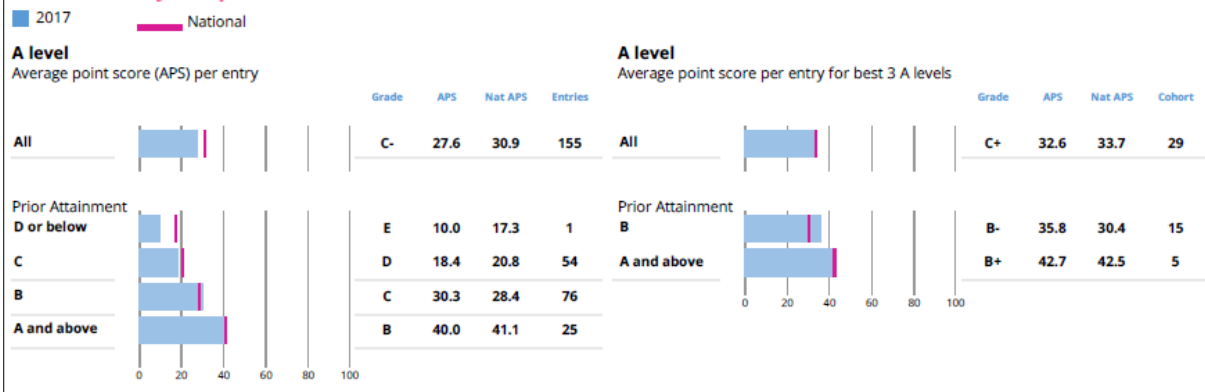
3 Year trend



A-level value added is now significantly above the National average. The 3 year trend shows a rapid improvement from -0.2 in 2015 to +0.3 in 2017. This VA score places Cox Green in top 20% of schools.

Average Grade

Attainment by KS4 prior attainment: Level 3



English and Maths Progress

English progress

All learners

Key stage 4 prior attainment

Outcomes - students at the end of 16-18 studies

	Learners in scope	Improved grade	% that improved grade	% that improved grade nationally	Gained grade C and above ²	% that gained grade C and above	% that gained grade C and above nationally	Average progress score	Average progress score nationally	Number not entered	% not entered	% not entered nationally
Fail	-	-	-	62%	-	-	3%	-	0.6	-	-	35%
Entry level and level 1 ESOL and functional skills	-	-	-	29%	-	-	5%	-	0.1	-	-	43%
GCSE grades F to G	-	-	-	37%	-	-	2%	-	-0.1	-	-	26%
GCSE grade E	-	-	-	32%	-	-	9%	-	-0.1	-	-	22%
GCSE grade D and level 2 ESOL and functional skills	1	1	100%	35%	1	100%	35%	2.0	0.0	0	0%	15%
Total	1	1	100%	34%	1	100%	22%	2.0	0.0	0	0%	19%



Mathematics progress

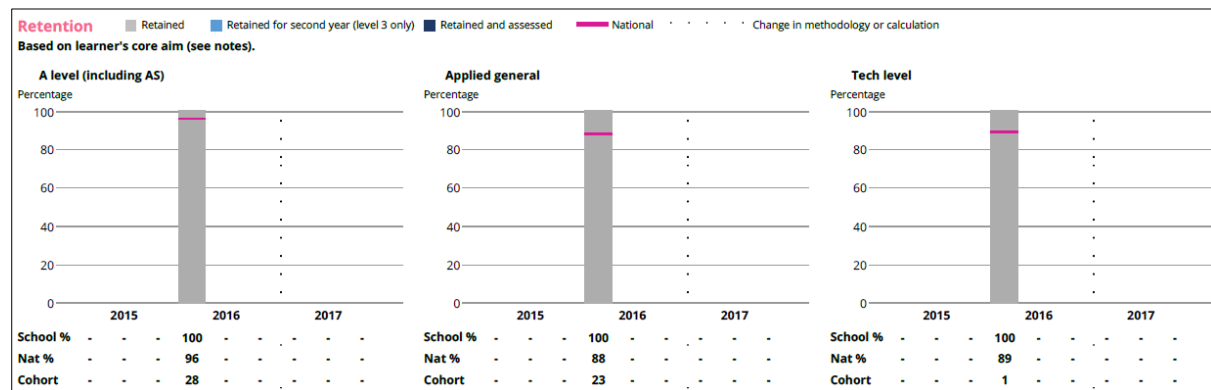
All learners

Key stage 4 prior attainment	Outcomes - students at the end of 16-18 studies											
	Learners in scope	Improved grade	% that improved grade	% that improved grade nationally	Gained grade C and above ¹	% that gained grade C and above	% that gained grade C and above nationally	Average progress score	Average progress score nationally	Number not entered	% not entered	% not entered nationally
Fail	-	-	-	70%	-	-	0%	-	0.4	-	-	23%
Entry level and level 1 functional skills and use of maths and FSM ¹	-	-	-	21%	-	-	3%	-	-0.1	-	-	41%
GCSE grades F to G	-	-	-	40%	-	-	1%	-	0.0	-	-	21%
GCSE grade E	-	-	-	24%	-	-	5%	-	-0.2	-	-	20%
GCSE grade D and level 2 functional skills and use of maths and FSM ¹	2	2	100%	37%	2	100%	37%	1.0	0.1	0	0%	12%
Total	2	2	100%	37%	2	100%	18%	1.0	0.0	0	0%	18%

Destination Data

	End of KS5	Number of learners	of which:				Destination not sustained	Activity not captured in data
			Education or employment / training destination	Apprenticeship	Any education destination	UK higher education		
All learners	2015	57	93%	x	81%	67%	x	x
	2014	38	95%	x	71%	61%	x	x
	2013	50	82%	x	59%	55%	x	14%
Disadvantaged	2015	5	x	x	x	x	x	x
	2014	x	x	x	x	x	x	x
	2013	x	x	x	x	x	x	x
Female	2015	25	100%	x	x	79%	x	x
	2014	15	100%	x	73%	53%	x	x
	2013	20	74%	0%	61%	57%	0%	x
Male	2015	35	88%	x	x	58%	x	x
	2014	23	91%	x	70%	65%	x	x
	2013	30	88%	x	58%	54%	x	x
National	2015	366145	89%	7%	66%	51%	8%	3%
	2014	363040	88%	7%	65%	48%	6%	3%
	2013	358978	73%	5%	65%	48%	10%	15%

Retention Data



Retention score of 100% in all areas is above the National average.